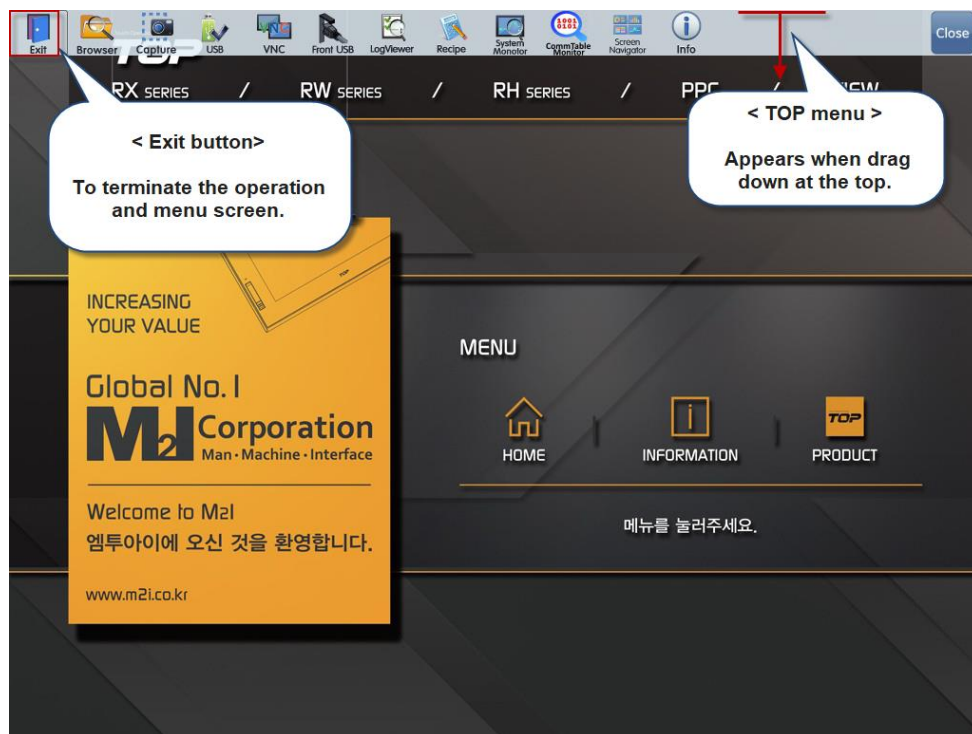


Table of Content

Table of Content.....	1
VNC_FTP Funtion.....	2
1.1.1 VNC Viewer Icon.....	2
1.1.2 FTP Icon	8



[Pic. Top menu of operation screen]

1.1.1 VNC Viewer Icon

VNC (Virtual Network Computing) is a function that enables monitoring and control of TOP screen that is set as VNC server on other TOP or mobile/PC device. VNC viewer is a program that allows remote access to TOP screen with VNC server setting.

This VNC viewer is included in TOP, while it can also be installed in a PC and a mobile device. For PC version, search for [VNC Viewer] on the website and download the file. For mobile version, search [VNC Viewer] in Play Store on mobile and install the app.

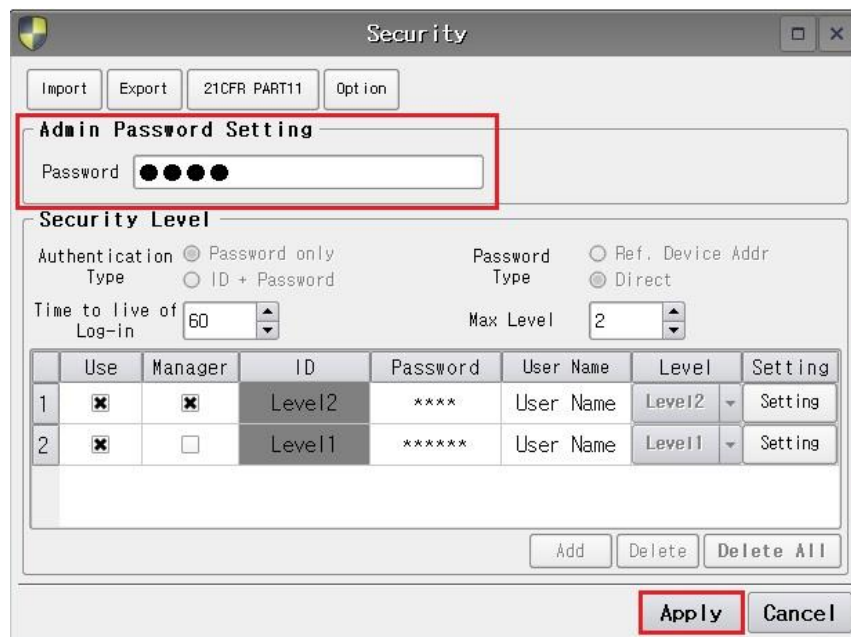
To activate VNC function, it must be connected to Ethernet network. On local Ethernet networks, you can connect VNC to PC that has been assigned with the same network IP bandwidth to the server TOP. VNC connection is also available on mobile devices with Wi-Fi function.

On public IP Ethernet networks, access to all online PC is available.

Connection of multiple VNC Viewer on VNC server is available, and TOP offers both VNC server and VNC viewer functions. VNC Viewer is the program that allows remote access to TOP that has VNC server setup.

VNC Server Settings

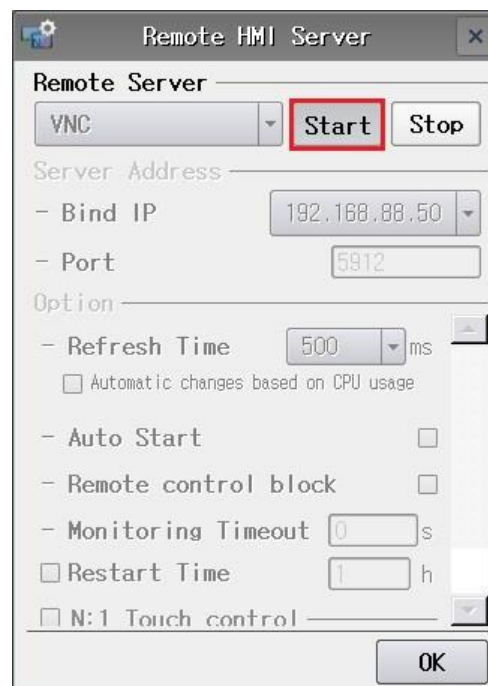
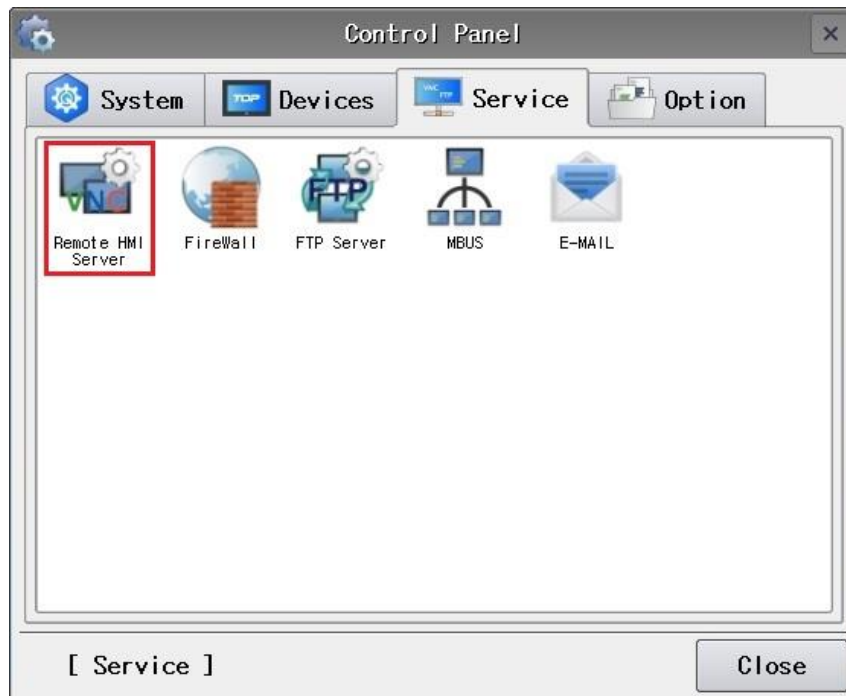
Before using the VNC Viewer, you must first configure the VNC Server.



[Pic. Admin Password Setting]

(1) Set an Admin Password

For security, set an administrator password under [Control Panel] - [System] - [Security]. Once configured, the password will be required to access the menu screen.



[Pic. Remote HMI Server]

(2) Run the Remote HMI Server

Go to [Control Panel] - [Service] - [Remote HMI Server] and run the service.

(3) Start the VNC Server

When you press the Start button, the VNC Server will be activated. At this point, the detailed setting options will be disabled.

No	Detailed Settings	Description
1	Bind IP	Sets the VNC server IP address. The available IPs (wired and wireless Wi-Fi) appear under [Control Panel] - [System] - [Ethernet]. Select the IP to use.
2	Port	Sets the connection port number for the VNC server.
3	Refresh Time	Defines the response interval of the VNC Viewer. A shorter time improves responsiveness, but may increase CPU load on the TOP. (This option depends on CPU usage.)
4	Auto Start	Automatically starts the VNC server when the TOP is powered on or restarted.
5	Remote control block	Allows monitoring only, and control operations are disabled.
6	Monitoring Timeout	If monitoring stops, the system waits for the specified time before generating an error.
7	Restart Time	Sets the interval for automatically restarting the VNC server.
8	Control Timeout	If control functions stop, the system waits for the specified time before generating an error.

(4) Configure detailed settings

The detailed settings can only be changed when the server is in the Stop state.

Once the VNC Server has been set up on the TOP, you can connect remotely using a VNC Viewer.

VNC Viewer Settings

In the next section, we will explain how to use the VNC Viewer on the TOP.



Click  icon and the following login window will be displayed.

[Pic. VNC Viewer]

Enter the IP address and port number of the VNC server.

And then enter the Admin Password set in [Control Panel] - [System] - [Security].

The monitoring will be started if you press the Connect button.

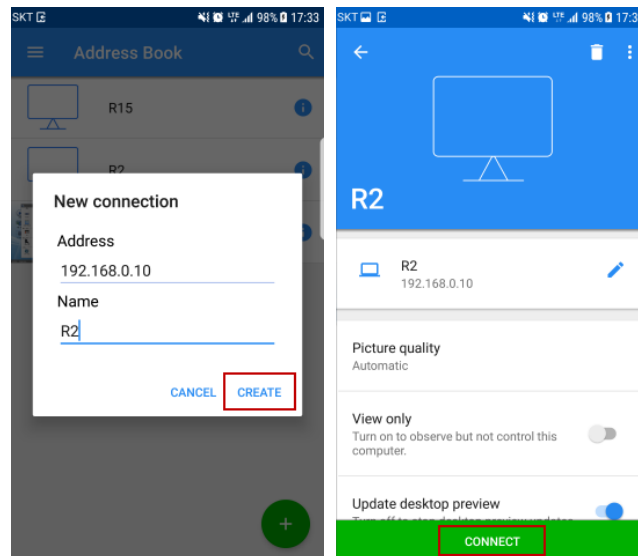
If you run VNC viewer on mobile device or PC, proceed with the following steps.

(1) Run VNC Viewer.

(2) Click  button on the bottom left.

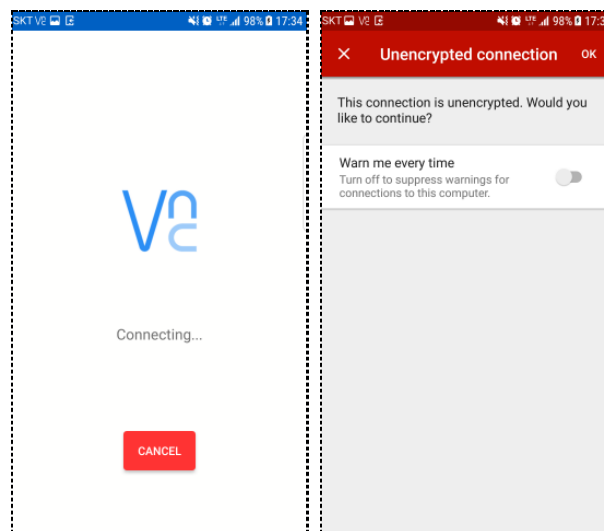
(3) New connection screen will pop up. Enter VNC server's IP in Address and the name of the connected server in Name at your discretion.

(4) Click [CREATE] button to move to Connection Screen. Click [CONNECT] at the bottom to connect.



[Pic. Mobile VNC Viewer]

(5) Enter the Admin Password and check [Remember Password]. With this setting, you do not need to enter password the next time you log in.



[Pic. Mobile VNC Viewer]

When it has been successfully connected, you can monitor TOP screen of the VNC server as below. Also, you can click the mouse icon on the top to remote control if VNC server uses [Remote Control] function.

Click the mouse icon and a mouse cursor will be displayed on screen. Move the cursor and click to control.

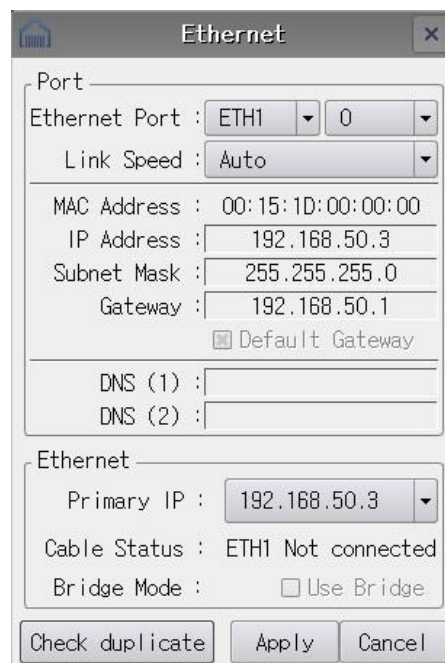


[Pic. Mobile VNC Viewer]

1.1.2 FTP Icon

FTP (File Transfer Protocol) is a protocol that enables file transmission between the server and a client based on TCP/IT protocol. This function allows sharing and transmission of files from server through Ethernet network.

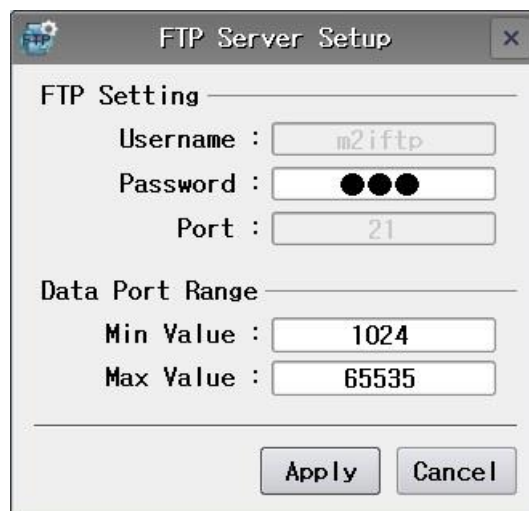
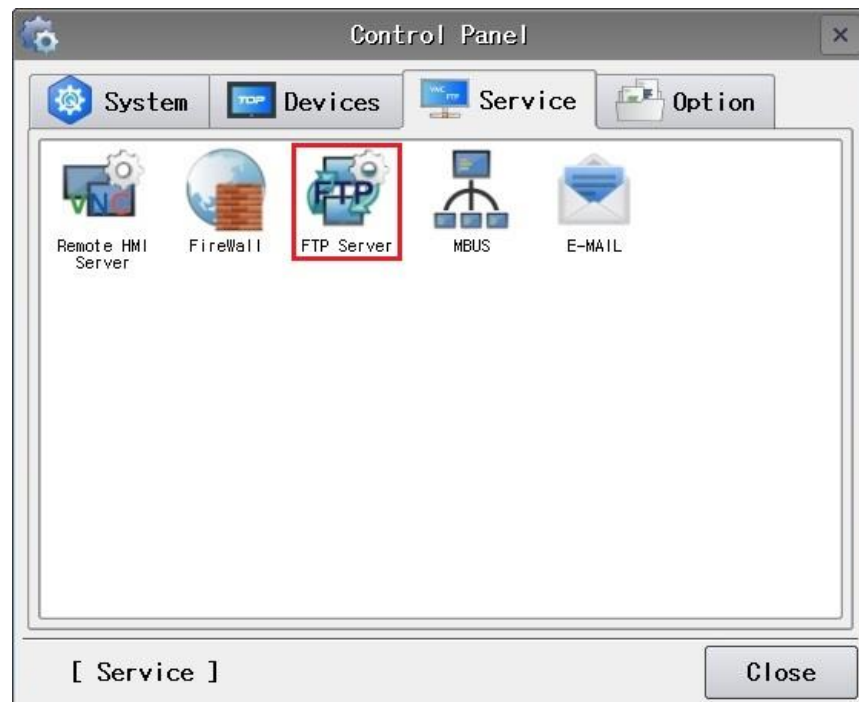
TOP offers both FTP server and FTP client functions. Let's begin by setting up the FTP Server.



[Pic. Ethernet Setting]

FTP Server Settings

(1) Configure the Ethernet connection under [Control Panel] - [System] - [Ethernet]. An active Ethernet connection is required.

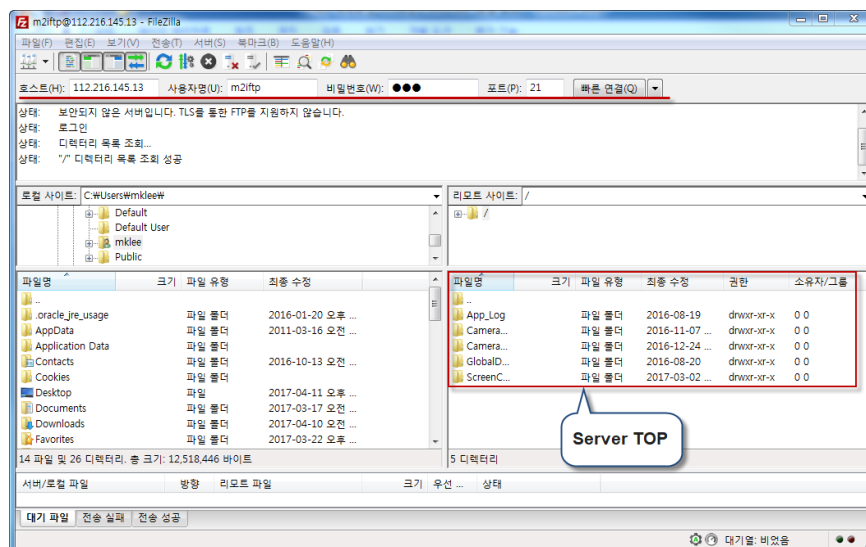


[Pic. FTP Server Setup]

- (2) Go to [Control Panel] - [Service] - [FTP Server].
- (3) Set a password, then click Apply to complete the FTP Server Setting.

FTP Client Settings

To access TOP with FTP server setting from a PC, install FileZilla which is a free FTP client program. Search the installation file on the website (filezilla-project.org) to install. After installing it, the following screen will be displayed.

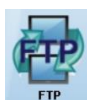


[Pic. PC FTP client]

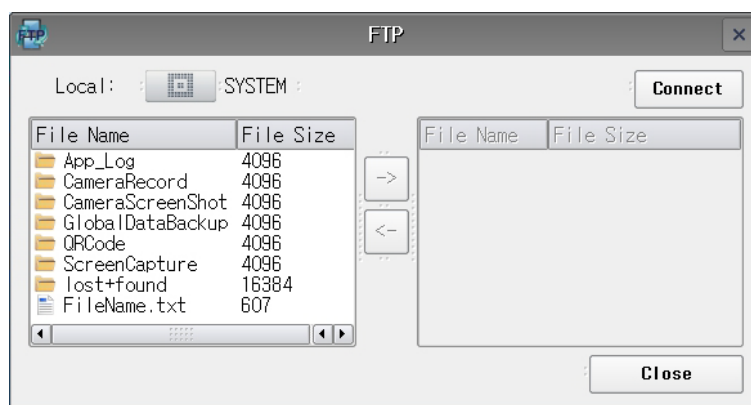
Set the following four items and click [Quick Connection] to connect to the server.

No	Detailed Settings	Description
1	Host	Enter FTP server IP. You can find it at [Control Panel] - [System] - [Ethernet] at the server TOP.
2	User name	It is fixed to m2ftp.
3	Password	Enter the password set at [Control Panel] - [Service] - [FTP Server].
4	Port	It is fixed to no. 21.

When successfully connected to the server, you can see server TOP's folders and files on the right and select them with the mouse to send them to PC.

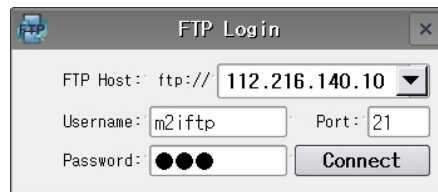


To access FTP server from TOP, click  icon.



[Pic. FTP]

Click [Connect] button on the top right corner of FTP screen, and FTP login screen will be displayed.



[Pic. FTP login screen]

Use the same method as PC FTP client. Configure the 4 settings below and click [Connect] button to access the server.

No	Detailed Settings	Description
1	FTP Host	Enter FTP server IP. If TOP is the server, it can be checked at [Control Panel] - [System] - [Ethernet]. If PC is the server, check the IP of PC at [Control Panel] - [Network Connections].
2	User name	The name of the FTP server. It is fixed to m2iftp if TOP is the server.
3	Port	It is fixed to no. 21.
4	Password	Enter the password of the FTP server. Enter the password set at [Control Panel] - [Service] - [FTP Server] if TOP is the server.

When connected to FTP server, the server files will appear on the right side of the FTP screen. Use the arrow in the center to transmit files.