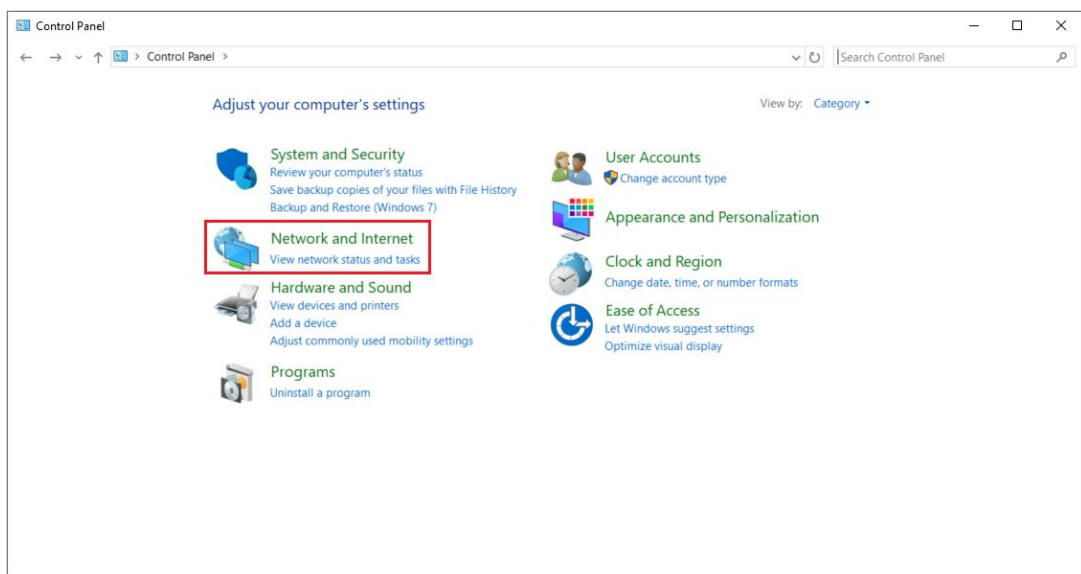


## Transferring Project Files via Wireless Wi-Fi

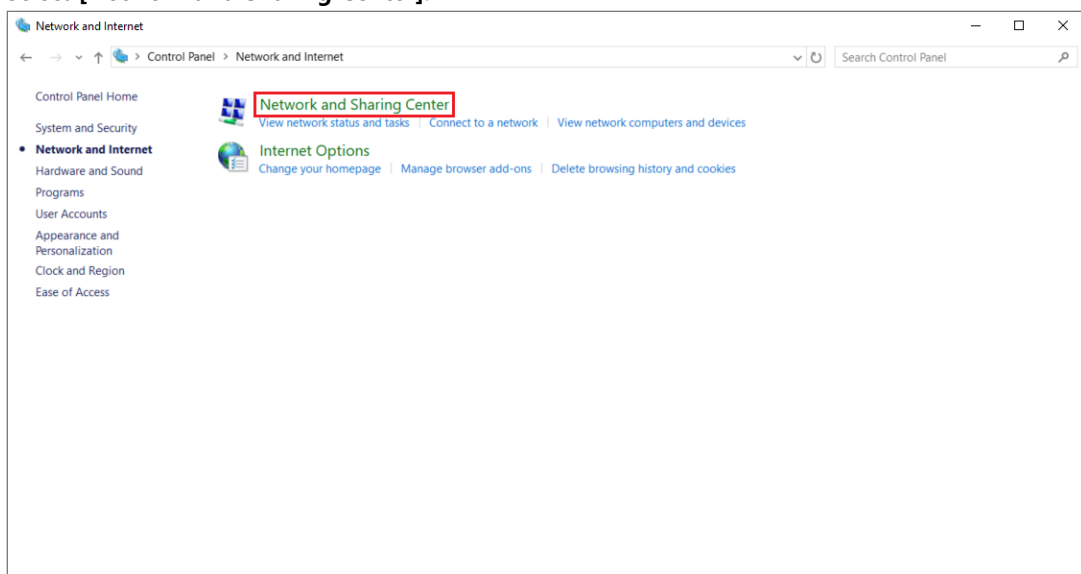
The **wireless Wi-Fi** feature is supported on **TOPR Premium** models and **TOPRH Wireless** models. This guide explains how to connect via Wi-Fi and transfer project files from your PC to the TOP device.

### 1.1 Check Wi-Fi Settings on the PC

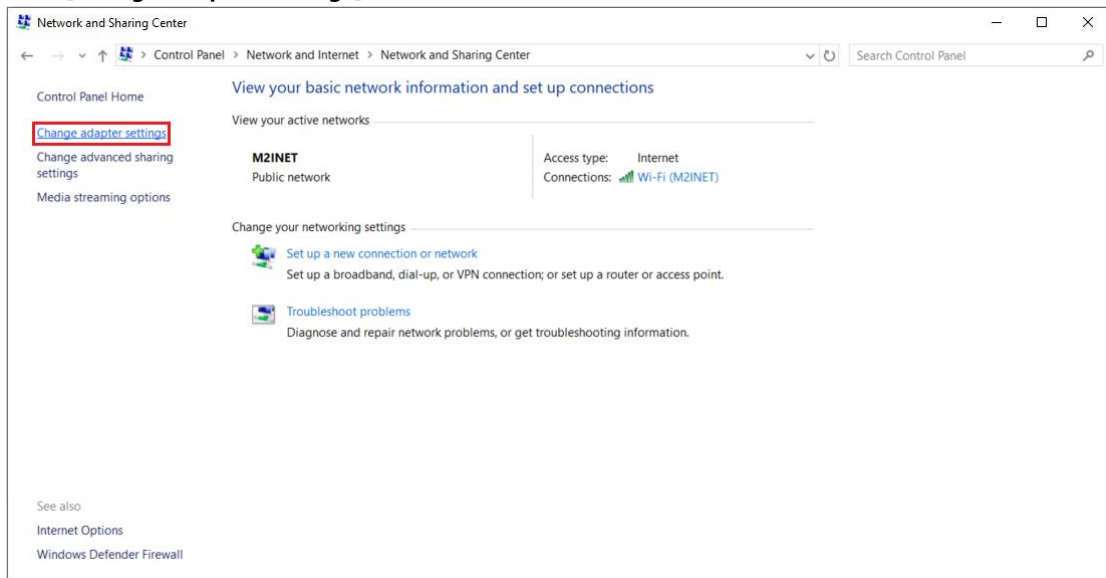
1. Open the **[Control Panel]** on your PC and go to **[Network and Internet]**.



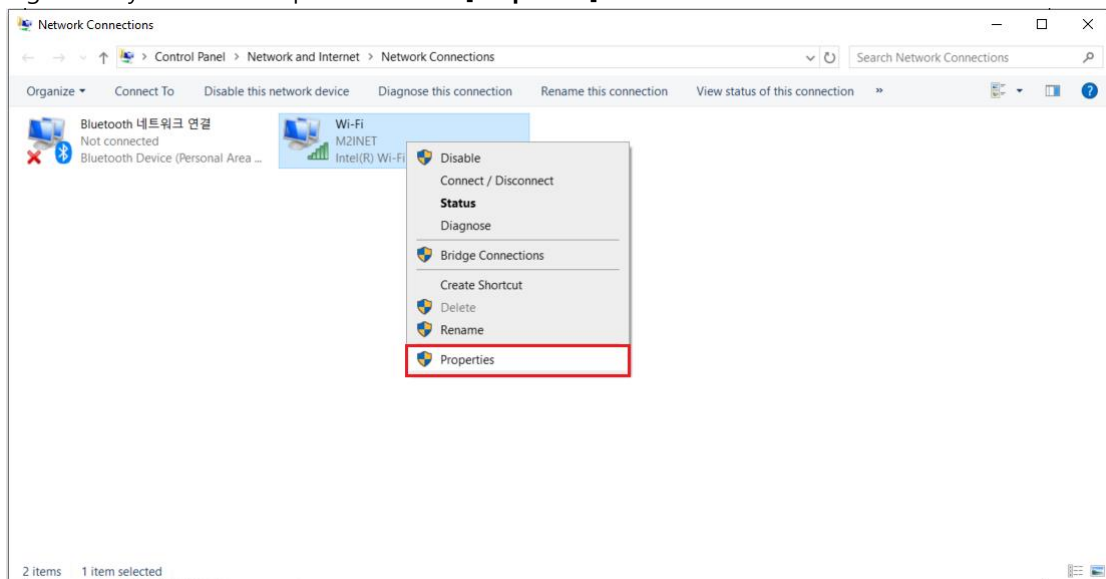
2. Select **[Network and Sharing Center]**.



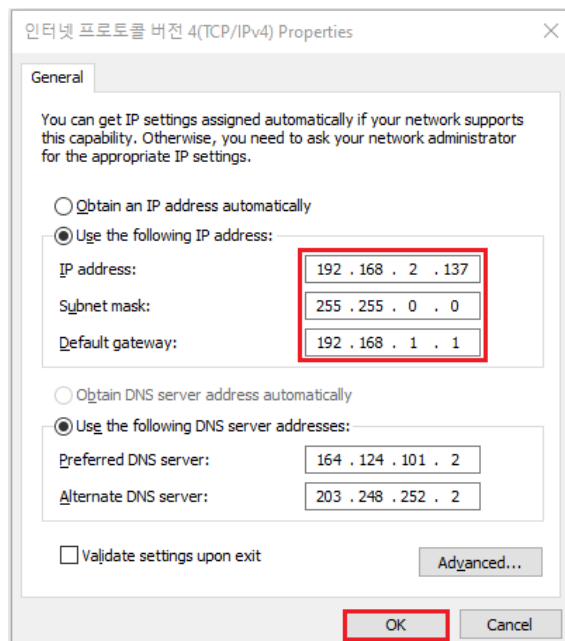
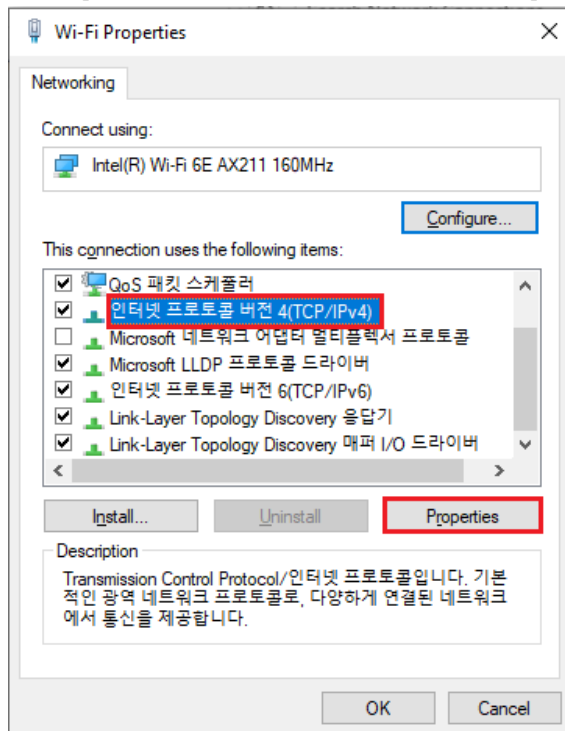
3. Click **[Change adapter settings]**.



4. Right-click your **Wi-Fi** adapter and select **[Properties]**.



5. Select **[Internet Protocol Version 4 (TCP/IPv4)]** and click **[Properties]**.



6. Note down your **IP address**, **Subnet mask**, **Default gateway**, **Preferred DNS Server (DNS1)**, and **Alternate DNS server (DNS2)** settings.

When configuring Wi-Fi on the TOP device:

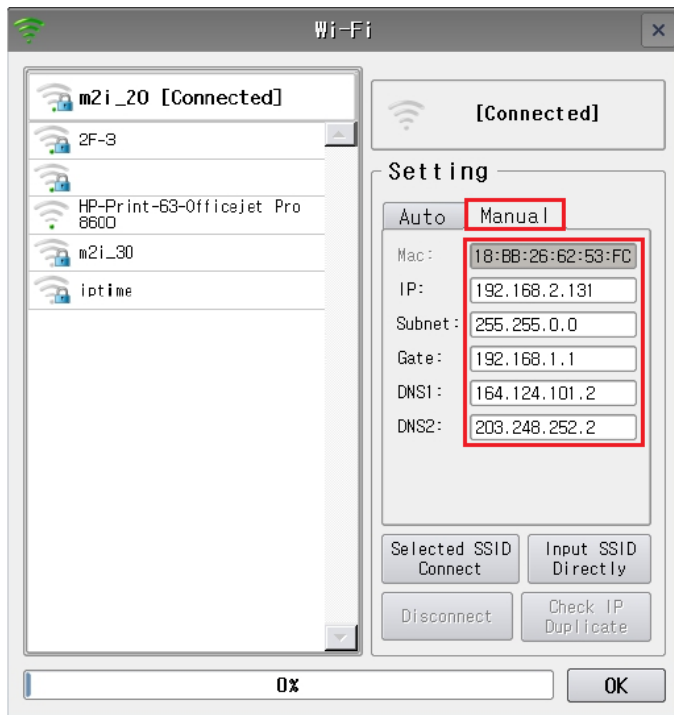
- The **first three octets** of the IP address must be the same as your PC's.
- The **last octet** must be different.
- **Subnet, Gateway, DNS1, and DNS2** must be identical to the PC's settings.

## 1.2 Configure Wi-Fi on the TOP Device

1. On the TOP device, open **[Control Panel] - [System] - [Wi-Fi]**.



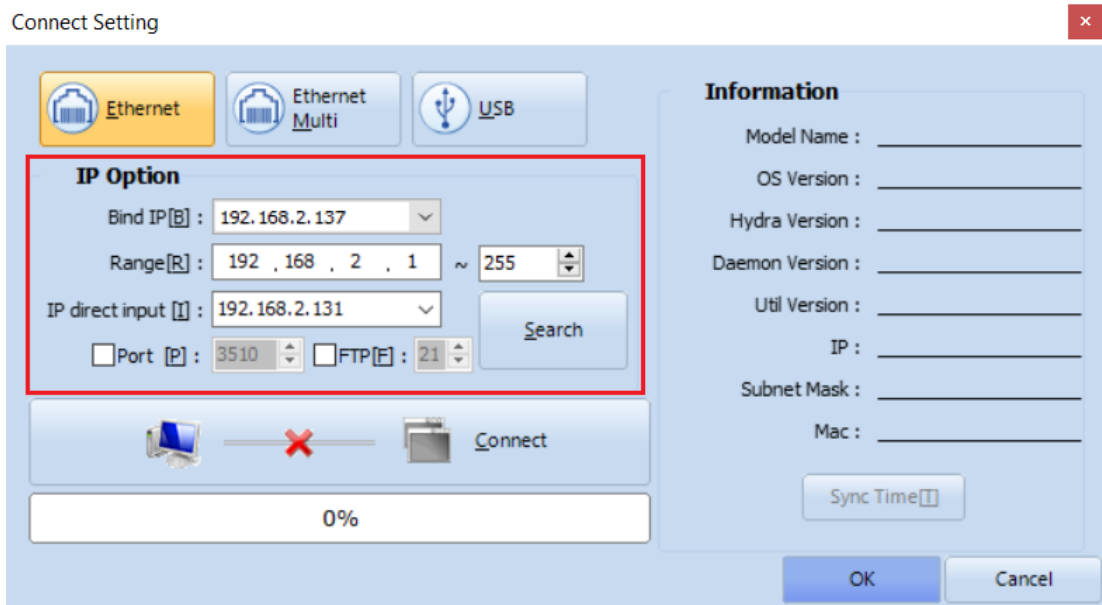
2. The Wi-Fi screen will display available networks in the left panel.
3. Select the network you wish to connect to and click **[Connect]**.



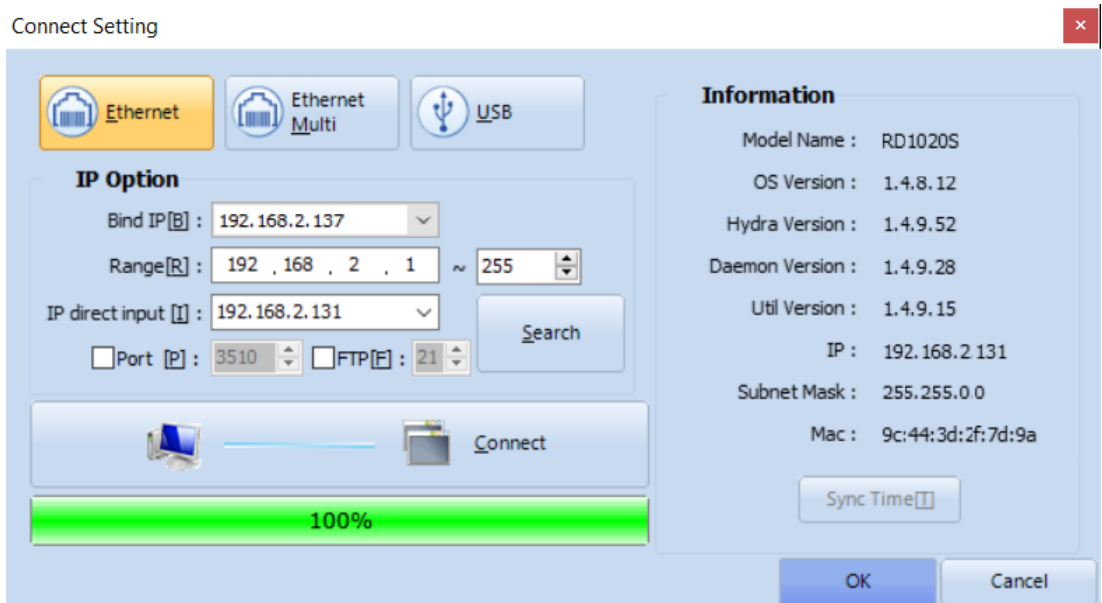
4. Set the IP mode to **[Manual]**, then enter the **IP/Subnet/Gate/DNS1/DNS2** values:
  - o IP address: First three octets match the PC, last octet is different.
  - o Subnet, Gateway, DNS1, DNS2: Same as the PC.

### 1.3 Connect via Wi-Fi in TOP Design Studio and Transfer the Project

1. In **TOP Design Studio**, press **F9** or go to **[Trans] - [Full Build & Transfer]**.
2. After the build is complete, the **[Connection Setting]** window will appear.
3. Set the connection type to **[Ethernet]** - the **[PC IP]** address will be displayed automatically.
4. To search the TOP device:
  - Adjust the **[Range]**, or
  - Enter the TOP device's IP address directly in **[IP direct input]** and click **[Search]**.



5. When the TOP device is found, its details will appear under **[Information]**.



6. Click **[OK]** to begin transferring the project file.