

# ■ TOP COMMUNICATION AND INTERFACE MANUAL

Published by M2I Corporation



M2I Corporation


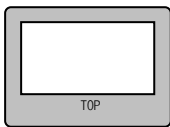
# AND WEIGHING INDICATOR Series

## AND WEIGHING INDICATOR Interface

The following section describes the system configuration and interface between AND Weighing Indicator and TOP by serial RS-232 / RS-485.

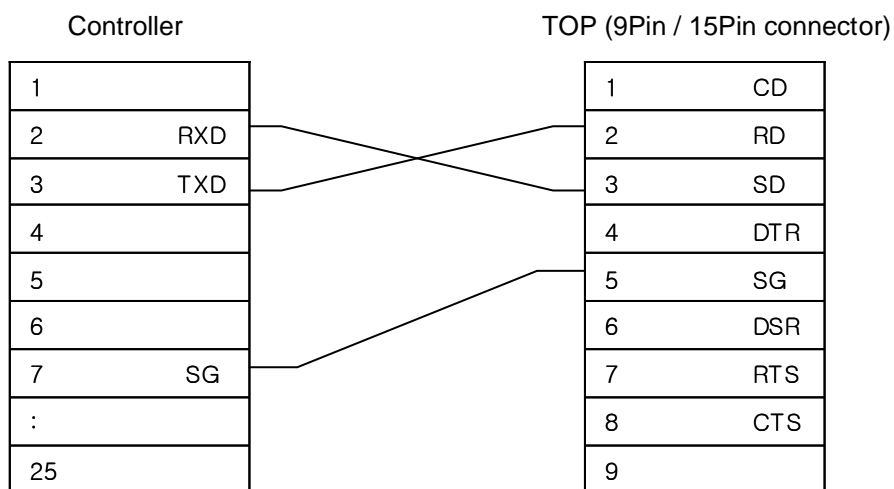
### System Configuration

This figure shows system configuration to connect AND Weighing indicator to TOP.

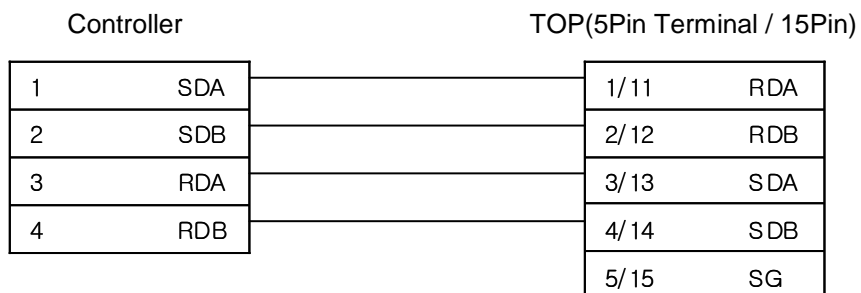
Controller	Comm. Unit	Cable	TOP
	←→		
AND Weighing Indicator	OP03 (option module)	Refer to connection diagram RS422/485	All TOP
	OP04 (option module)	Refer to connection diagram RS232	

### Cable Connection Diagram

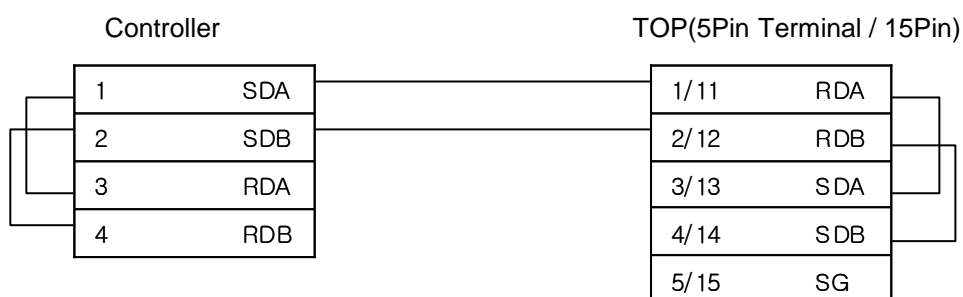
(1) RS-232 connection diagram(AND Weighing Indicator ↔ TOP)



(2) RS-422 connection diagram(AND Weighing Indicator ↔ TOP)



(3) RS-485 connection diagram(AND Weighing Indicator ↔ TOP)



### AND WEIGHING INDICATOR Setup

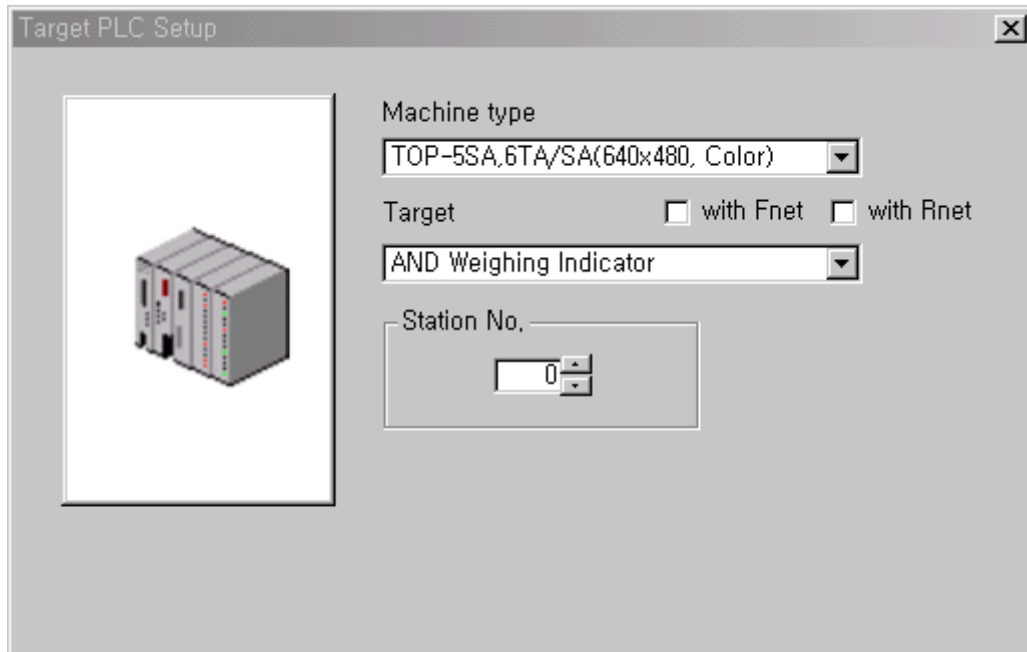
CONTROLLER	
No Address	
Address exist	Only for RS422/485
Address	Only for RS422/485
Baud Rate	9600 bps
Data Bit	7 bit
Stop Bit	1 bit
Parity Bit	EVEN

Communication parameters of AND Weighing Indicator can be set using display panel on the front of indicator.

## TOP Setup

### (1) TOP Designer setup

Select Controller type of “AND Weighing Indicator” as shown figure.



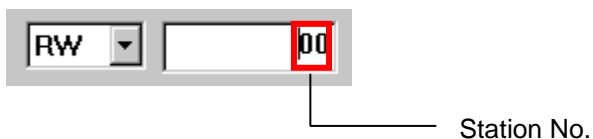
### (2) Serial communication setup in TOP

Communication setup in 'Comm. Setup' Menu are as follows :

- Serial Baud Rate : Same as controller's setup
- Serial Data Bit : Same as controller's setup
- Serial Stop Bit : Same as controller's setup
- Serial Parity Bit : Same as controller's setup
- Serial Signal Level : Same as controller's setup
- Station No. at Communication Diagnosis(0~31) : Same as controller's setup

### Addressing Method of TOP for AND Weighing Indicator

The address of TOP for AND Weighing Indicator means station number in case of using RS422 / 485 serial interface. Therefore, when TOP is connected to controller with RS-232, address of TOP for AND weighing indicator should be zero (00)



### Available Address List

DEVICE	Command	Read/Write	Address
RW	Data request	R	-
MZ	Zero display	W	-
MT	Tare	W	-
CT	Clear Tare value	W	-
MG	Display gross value	W	-
MN	Display net value	W	-
Hi	Set upper limit value	W	-
Lo	Set lower limit value	W	-
S0	Set final value	W	-
S1	Set free fall value	W	-
S2	Set preliminary value	W	-
S3	Set zero band	W	-